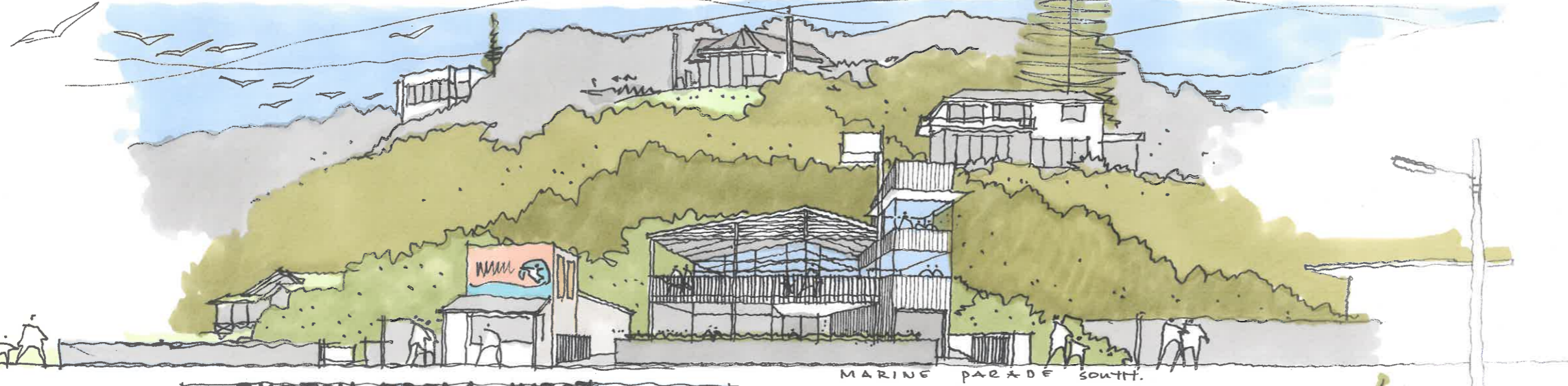
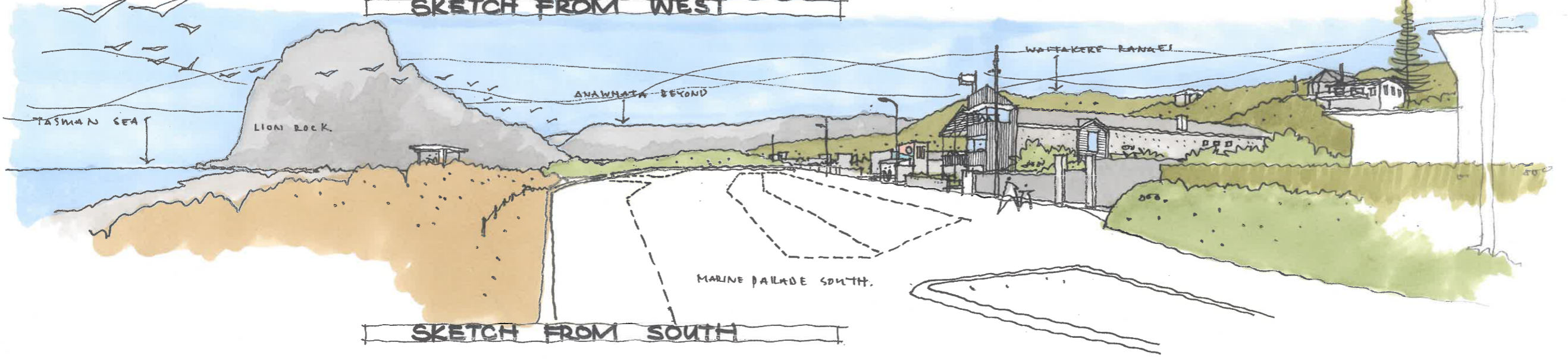


SKETCH FROM NORTH



SKETCH FROM WEST

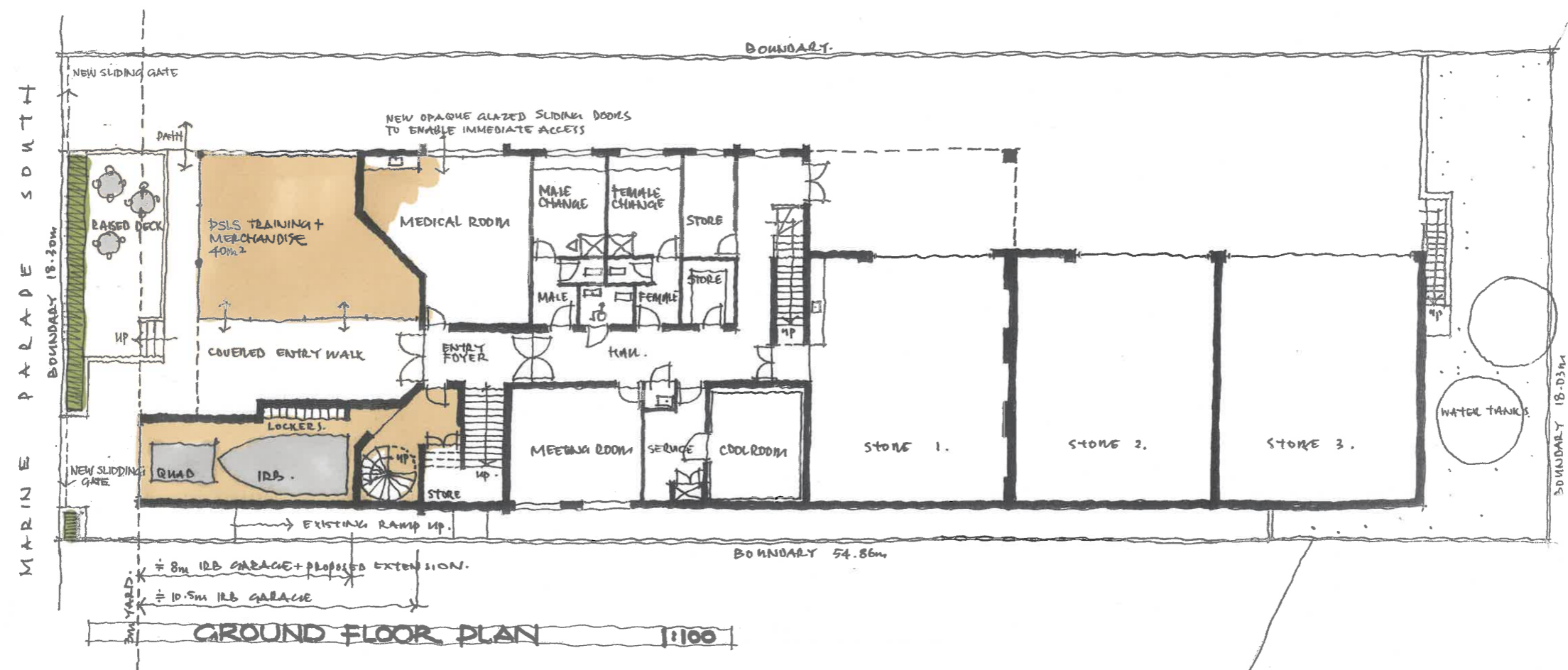
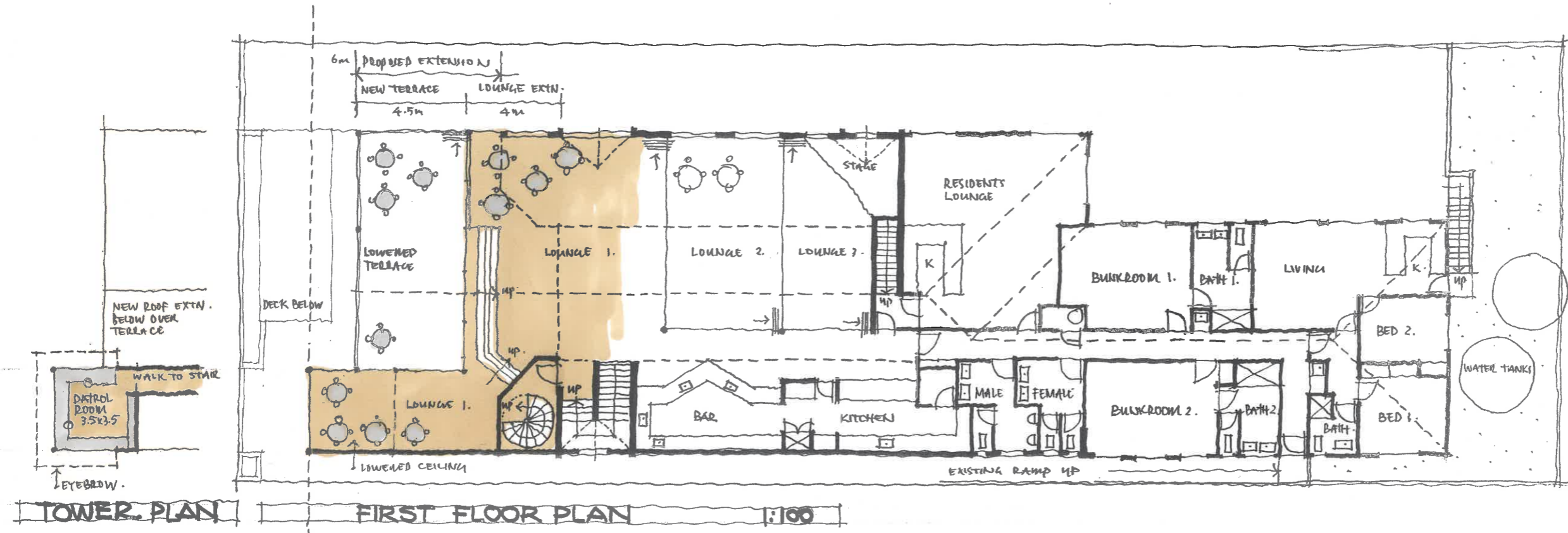


SKETCH FROM SOUTH

PIHA SURF LIFE SAVING CLUB • PROPOSED EXTENSIONS 23 MARINE PARADE SOUTH - PIHA ©28 JUNE 2014 4798-P3

**hulena.**  
 HULENA ARCHITECTS LIMITED  
 9 MELROSE STREET  
 NEWMARKET  
 AUCKLAND  
 NEW ZEALAND  
 T 09 524 6955  
 F 09 520 6522  
 E OFFICE@HULENA.COM  
 WWW.HULENA.COM

THE COPYRIGHT TO THESE DRAWINGS AND ALL PARTS THEREOF IS THE PROPERTY OF HULENA ARCHITECTS LIMITED



**PIHA SURF LIFE SAVING CLUB • PROPOSED EXTENSIONS**

PRELIMINARY CONCEPT ONLY - SUBJECT TO PLANNING ASSESSMENT + LOCAL AUTHORITY APPROVAL

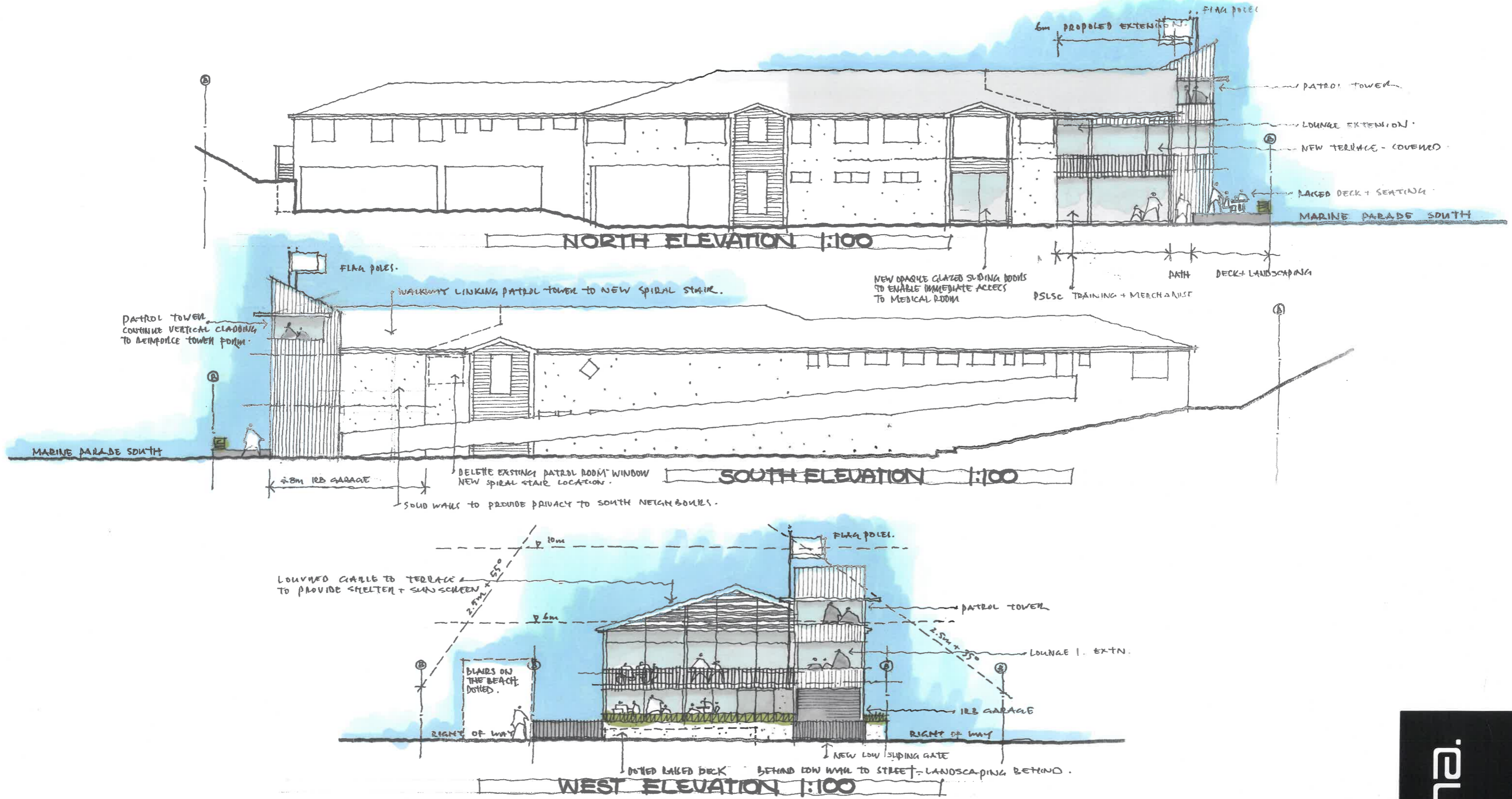
23 MARINE PARADE SOUTH • PIHA • © 10 JUNE 2014

**hulena.**  
 HULENA ARCHITECTS LIMITED  
 9 MELROSE STREET  
 NEWMARKET  
 AUCKLAND  
 NEW ZEALAND  
 T 09 524 6955  
 F 09 520 6522  
 E OFFICE@HULENA.COM  
 WWW.HULENA.COM

© 18 JUNE 2014  
 © 16 JUNE 2014

4798.P1

THE COPYRIGHT TO THESE DRAWINGS AND ALL PARTS THEREOF IS THE PROPERTY OF HULENA ARCHITECTS LTD.



**PIHA SURF LIFE SAVING CLUB • PROPOSED EXTENSIONS** 23 MARINE PARADE SOUTH - PIHA - 12 JUNE 2014 **4798-P2**

PRELIMINARY CONCEPT ONLY - SUBJECT TO PLANNING ASSESSMENT + LOCAL AUTHORITY APPROVAL

Ⓟ 18 JUNE 2014  
 Ⓜ 16 JUNE 2014

**hulena.**  
 HULENA ARCHITECTS LIMITED  
 9 MELROSE STREET  
 NEWMARKET  
 AUCKLAND  
 NEW ZEALAND  
 T 09 524 6955  
 F 09 520 6522  
 E OFFICE@HULENA.COM  
 WWW.HULENA.COM

THE COPYRIGHT TO THESE DRAWINGS AND ALL PARTS THEREOF IS THE PROPERTY OF HULENA ARCHITECTS LTD.