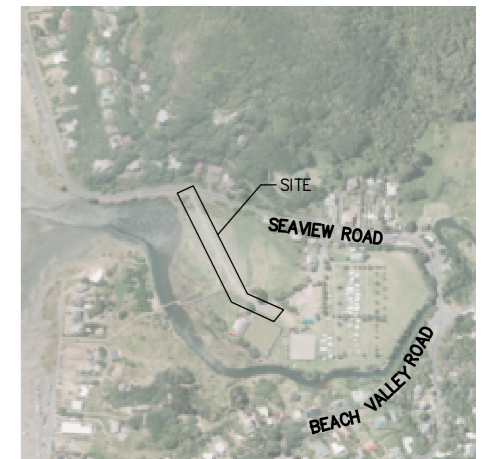
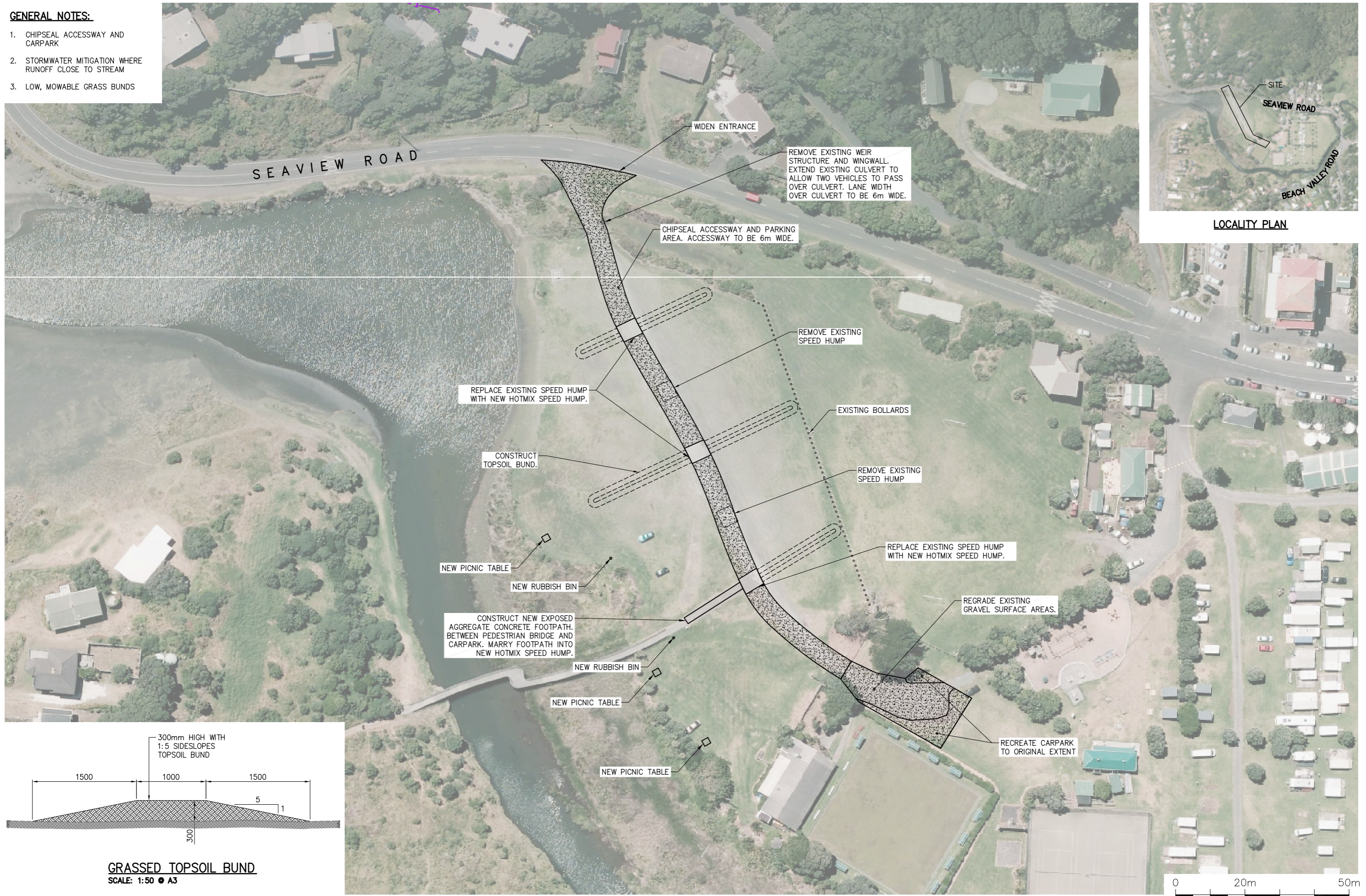
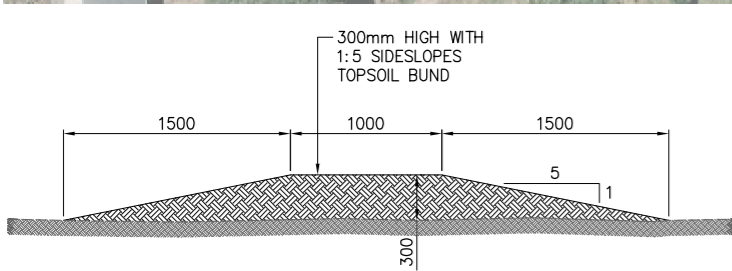


GENERAL NOTES:

1. CHIPSEAL ACCESSWAY AND CARPARK
2. STORMWATER MITIGATION WHERE RUNOFF CLOSE TO STREAM
3. LOW, MOWABLE GRASS BUNDS



LOCALITY PLAN



GRASSED TOPSOIL BUND
SCALE: 1:50 @ A3

Plotted: Wed, 06 Mar 2013 - 4:49pm By: BLUE BARN PC 108
 File Name: j:\Projects\1143 - Parks West Carparks\03 CAD\00 Drawings\1143 - 008 - 06 - Piha Domain for consultation v3.dwg

BY	DATE	REVISION	BY	APRVD	DATE
DESIGNED:	P.L.	10/7/2012	-	-	-/-
DRAWN:	P.L.	10/7/2012	-	-	-/-
DWG CHK:	-	-/-	-	-	-/-
DSGN CHK:	-	-/-	-	-	-/-
APPROVED:	-	-/-	-	-	-/-

AUCKLAND COUNCIL
PARKS WEST CARPARKS
PIHA DOMAIN. 10 SEAVIEW ROAD, PIHA - CONSULTATION PLAN

BLUE BARN CONSULTING LIMITED
 Level 1, Central One Bldg,
 4 Henderson Valley Road,
 PO Box 21 525
 Henderson
 Auckland 0650
 ph: +64 9 839 7009
 fax: +64 9 835 3926



STATUS:	DRAFT ONLY	CONTRACT NUMBER:	1143
DRAWING NO.:	1143 - 008	SCALE:	1:1000 @ A3
		REVISION:	-