

Proposed Hillary Trail running event

Stakeholder Meeting



2 July 2012

Agenda

- Introduction - Mace Ward, Manager Regional and Specialist Parks
- Discretionary application process
- Policy framework for assessment
- Kauri dieback management
- Monitoring effects
- Presentation by the applicant - Shaun Collins
- Questions?

Background on the Trail

- Opened in 11 January 2010
- 75km – challenging tracks / not a ‘Great Walk’
- Number of submissions to Regional Parks Management Plan (RPMP) process
- Council taken a cautious approach to trail’s development
- Received an event application that is subject to the RPMP discretionary activities consent process

Discretionary application process

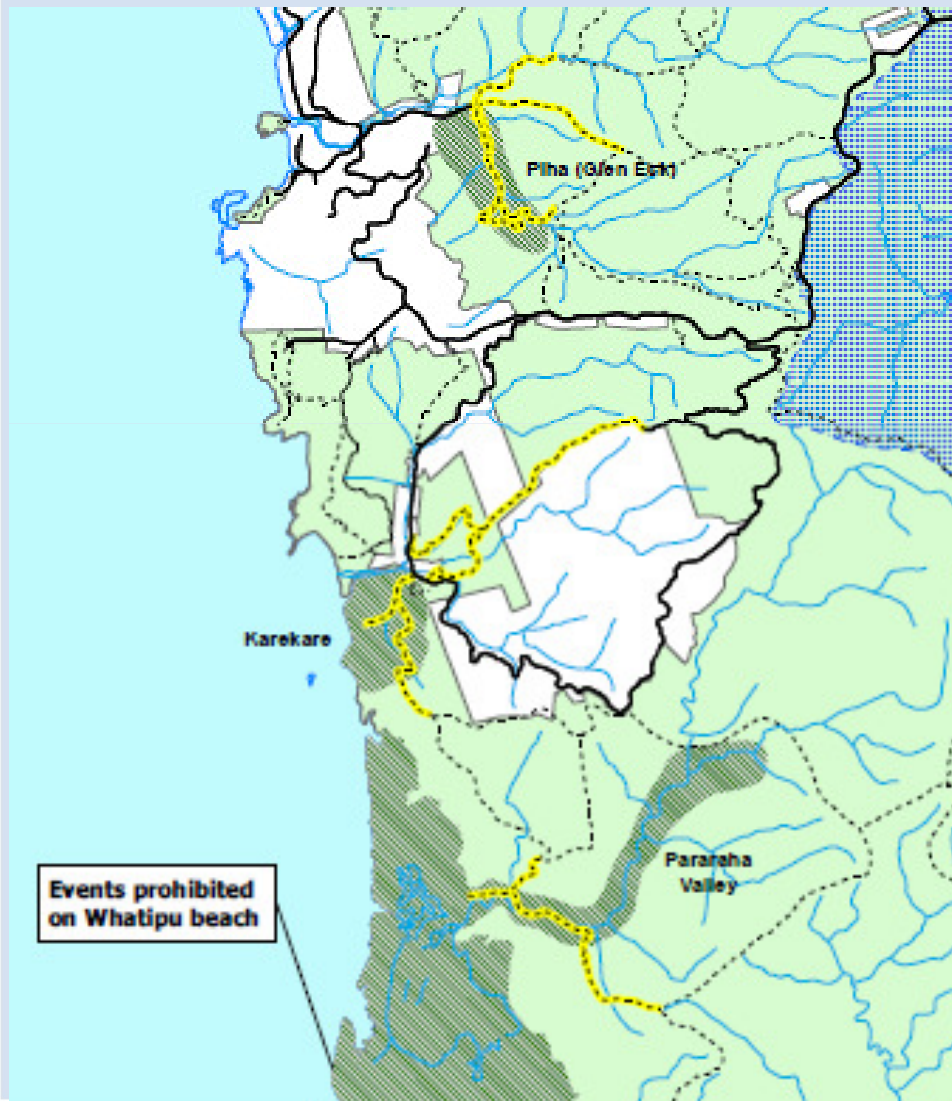
- Application received in March
- Initial assessment by ranger staff
- Assessment against the RPMP policies
- Stakeholder engagement
- Report to:
 1. the Parks Recreation & Heritage Forum
 2. the Regional Development & Operations Committee

Policy framework for assessment

RPMP policies:

- Hillary Trail special management zone
- No concessions on trail as entity (except for youth)
- Capped discretionary activity areas (Whatipu, Pararaha, Karekare, Wai o Kahu (Piha Valley), North Piha and Anawhata)
- Discretionary activities application process

Capped discretionary activity areas



Annual caps on sporting events

- Karekare – 4
- Pararaha Valley - 1
- Wai o Kahu – 3
- Whatipu - 3

Discretionary activity

- Consent required where activities exceed the informal group size
- Particular regard is given to whether the proposal is consistent with:
 - the RPMP and park values,
 - the Reserves Act classification;
 - the Waitakere Ranges Heritage Area Act; and
 - other approved consents,

Waitakere Ranges Heritage Area Act

Features to be protected (section 7) include:

- Terrestrial and aquatic ecosystems
- Natural landforms and landscapes
- Coastal character and dynamics
- The natural functioning of streams
- Quietness and darkness of the ranges and coastal areas
- Visual backdrop to the city
- Wilderness experience
- Opportunity for recreation and relaxation
- Subsistence of built features to the natural environment
- Historical ,traditional and cultural features
- Amenity of the local communities
- Public water supply

Potential for any adverse effects ...

on the park values, park infrastructure, approved activities and the enjoyment of other park users



	Estimated track visits per annum	Proposed event as estimated % monthly track visits
Slip Track	8,600	18%
Karamatura	13,000	12%
Gibbons	4,000	33%
Pararaha	7,400	16%
Zion Hill	8,400	18%
Kuataika	6,900	56%

Discretionary activity contd.

➤ Particular regard is given to whether the proposal:

- any additional council services required,
 - potential to set a precedent,
 - requires exclusion of the public,
 - any adverse impacts on the adjoining communities,
 - benefits the local & regional community & tangata whenua,
 - has support from affected persons,
 - the duration and timing of activities, and
-
- could reasonably be undertaken in another location

Discretionary activity contd.

➤ Favourable consideration given to:

- demonstrating environmental best practice & a sustainable approach
- providing opportunities for park visitors to extend themselves, and
- contributing positively to the local & regional economies & to perceptions about the natural values in the Auckland Region.

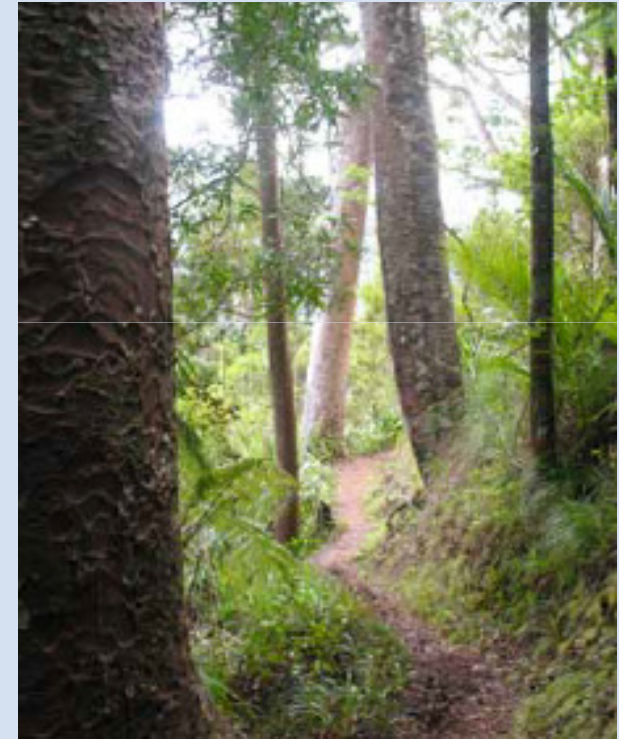
➤ Range of conditions maybe imposed eg. mitigation measures, limiting numbers.

➤ Public notification



Kauri dieback management

- Kauri protection zones & track closures
- Phytosanitary stations
- Track maintenance programme
- Special condition of consents for sporting events to use phytosanitary mats



Phytosanitary mats

- Due to participants being channeled through the phytosanitary mats – get 100% compliance



Photo-point monitoring

- To monitor adverse impacts of sporting events on tracks surfaces and peripheries



