

A close-up photograph of a lush green fern forest. The image is filled with numerous fern fronds, creating a dense, textured background. In the lower right foreground, a single, dark brown, curled fiddlehead (unopened frond) stands out against the vibrant green leaves. The lighting is soft and natural, highlighting the intricate details of the fern leaves.

# **5.0** FUTURE DEVELOPMENT CONSIDERATIONS





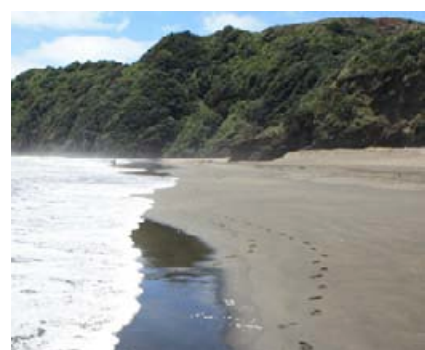




## 5.1 ANAWHATA

- Manage Anawhata as a remote experience area with a small gravel car park, toilet and directional signs.
- Advocate for the retention and maintenance of Anawhata Road as a road serving a remote location.
- Maintain the views from the car park to Anawhata Beach through appropriate vegetation management.
- Retain the existing farmland at Anawhata Farm as open pasture to maintain the landscape values and main vistas. Implement sustainable farming practices and the Anawhata Farm revegetation plan for riparian enhancement, stock shelter and for erosion control.
- Protect and maintain coastal habitats and the dune ecosystem and undertake pest plant and animal control, in particular protect penguins and burrowing seabirds at Te Waha Point.
- Manage the Anawhata catchment as a remote experience area with a marked tramping route. Maintain tracks leading into the wider area as tramping tracks and routes suitable for people with moderate to high levels of fitness and tramping footwear.
- Investigate the opportunity to develop a track on Anawhata Farm that would provide an alternative to the road walking section of the Hillary Trail in this area.
- Continue to implement the recommendations of the Keddle House Conservation Plan 2003, and operate it as a bach for short-term accommodation to be available for general public use and under licence to the Auckland Outdoor Activities Club.
- Manage the fire risk around Keddle House and its access road, through the regular maintenance of surrounding vegetation and the use of low fire risk species in any further amenity plantings within the house grounds, its access road and surrounding area.
- Renovate the former Craw Homestead and investigate options to support the Hillary Trail or other recreation, educational, conservation or community uses appropriate to the remote nature of the location.
- Manage the Craw Campground as part of the Hillary Trail and for camping provision generally.
- Investigate opportunities for self-contained campervans to camp overnight in this area, including: the end of Anawhata Road or the use of the concrete pad in front of the Craw Homestead; being cognisant of any impacts on those staying in the campground or homestead.
- Retain the open space on the site of the former Hettig House, known as Hettig clearing, for group recreational opportunities.



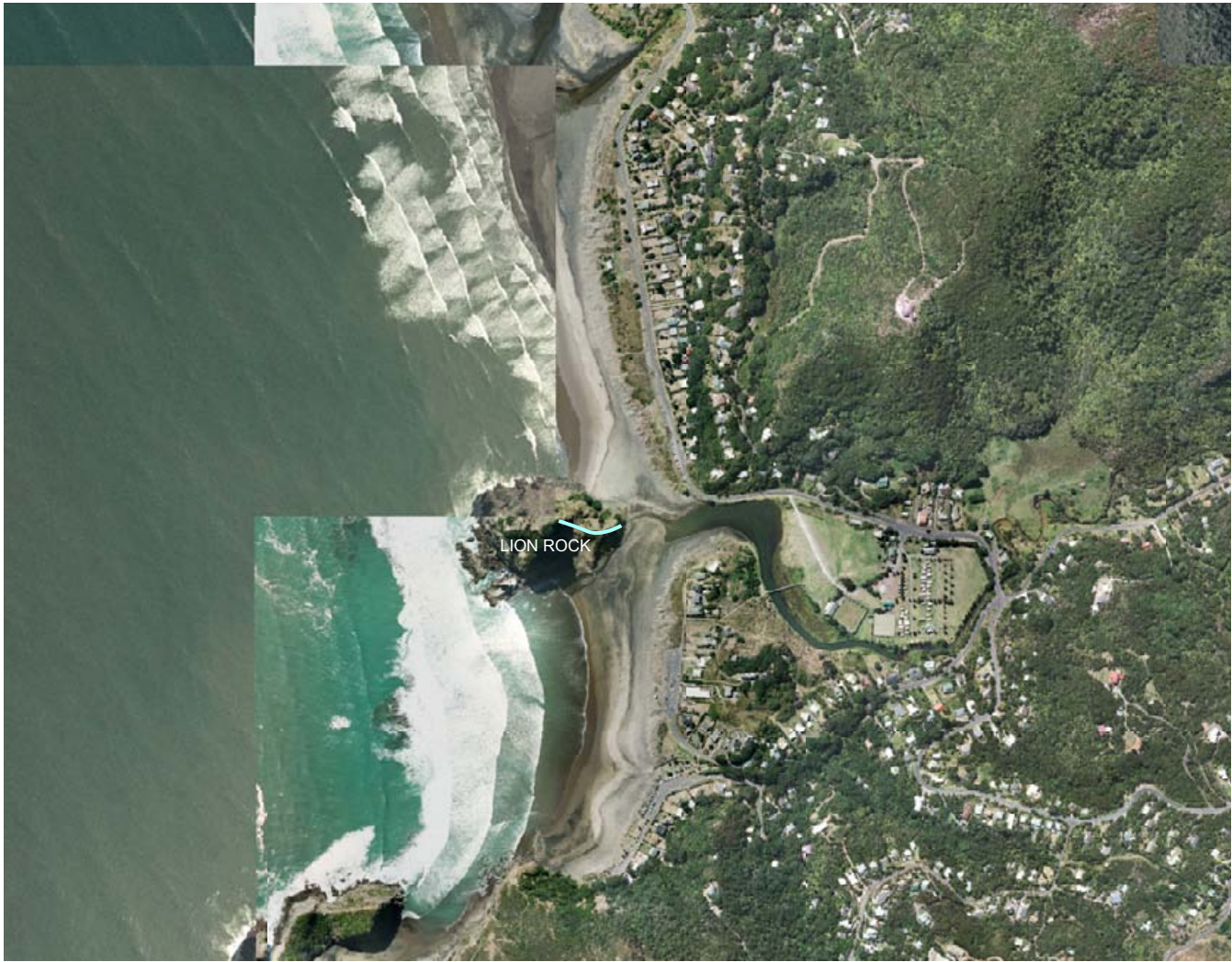




## 5.2 WHITES BEACH, TE WAHA POINT, NORTH PIHA

- Manage North Piha as a beach access point, informal picnic area and access point to tracks in a manner that protects its natural value.
- Protect dune systems by providing defined access points from the car parks and the road and maintain dune revegetation areas through pest plant and animal control.
- Protect fauna, especially nesting penguins and grey faced petrells, through ongoing pest animal control.
- Keep visitor infrastructure to a minimum with a car park, and directional and water safety signs.
- Promote and enforce restrictions related to vehicle use on the beach in accordance with Policy 31, including the modification of the car park surrounds to inhibit unauthorised access to the beach.
- Install public toilets in a discrete location, following consultation with the community.



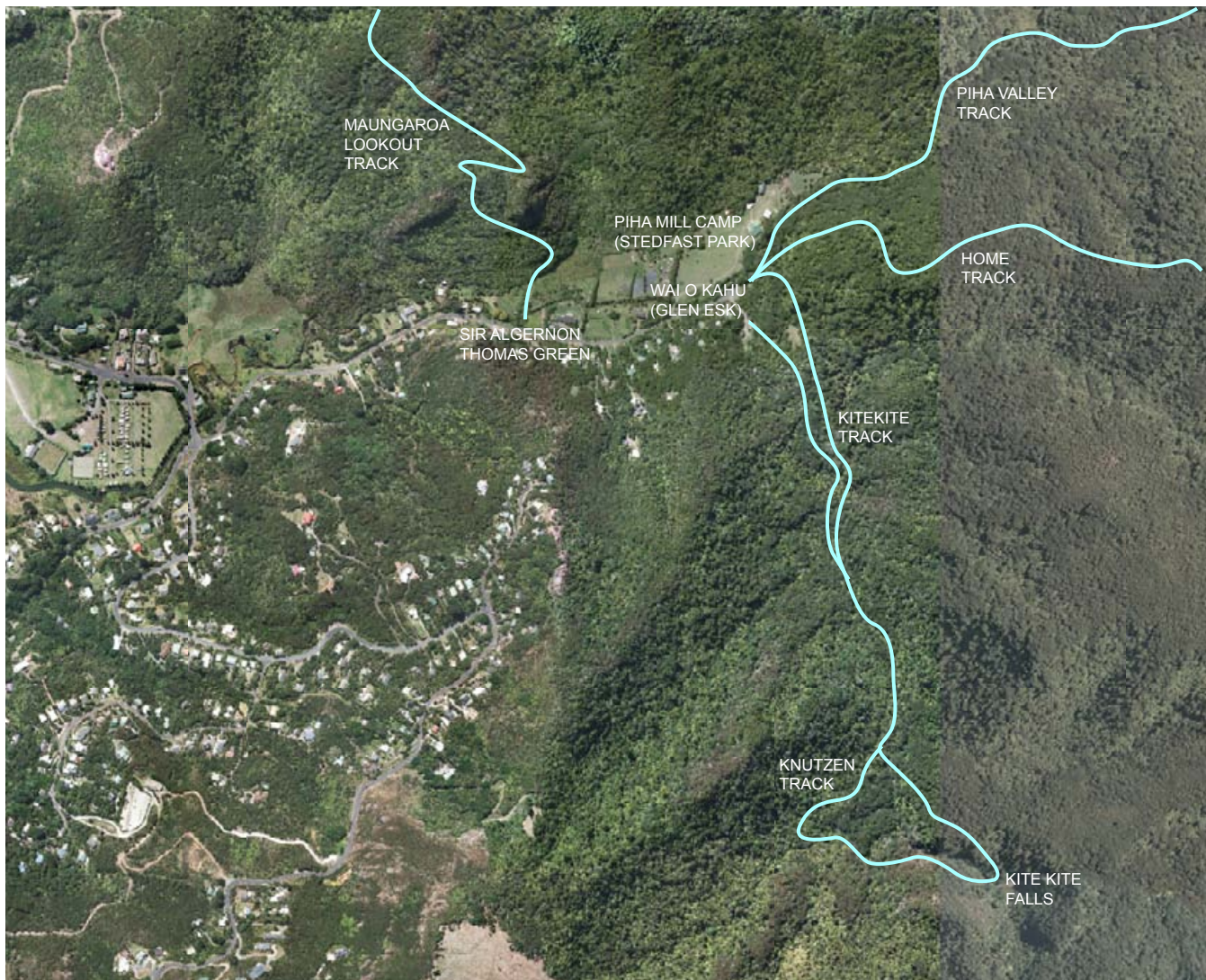





## 5.3 WHAKAARI (LION ROCK)

- Recognise the significance of the Lion Rock and wider area to Te Kawerau a Maki.
- Seek the scheduling of the plaques on Lion Rock in the District Plan.
- Undertake pest plant and animal control and small scale revegetation to restore the coastal vegetation and protect nesting penguins, taking into account the archaeological sites on the rock.





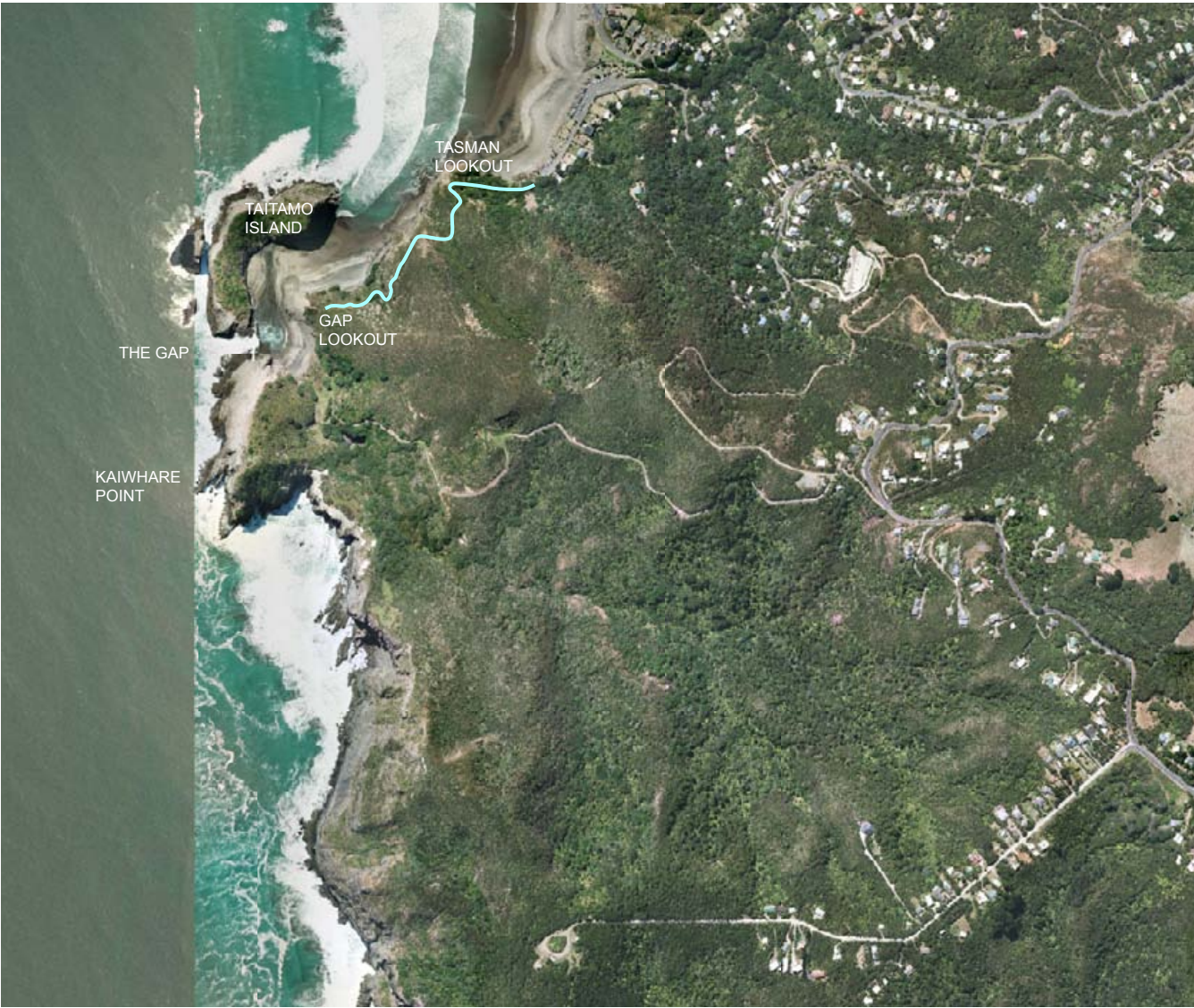




## 5.4 PIHA VALLEY, WAI O KAHU (GLEN ESK) AND PIHA MILL CAMP (STEDFAST PARK)

- Manage the end of Glen Esk Road as an access point to the track network in the area with unsealed car parking, toilets and picnic facilities, while retaining its natural setting.
- Maintain the Kitekite and Knutzen Tracks as walking tracks to and from the Kitekite Falls for visitors with moderate levels of fitness and walking footwear. A series of loop tramping tracks in the wider area will be maintained for people with higher levels of fitness and tramping footwear.
- Remediate the informal tracks off the Kitekite Falls track to stop off-track activity in the area.
- Review the future development of the Piha Mill Camp through the preparation of a development plan having regard to Policy 7.1.4 of the Regional Parks Management Plan, taking into consideration:
  - the continued provision of the outdoor education camp and the opportunity to provide for camping in association with this,
  - the potential to relocate the park depot and workshop, and
  - replacement of the current bridge with one that has the capacity and loading required to facilitate access for emergency vehicles, buses and other service vehicles.
- Maintain the Sir Algernon Thomas Green as a picnic area and investigate a track linking this with the forested hills donated by Sir Algernon Thomas.
- Manage the Nigel Hanlon Hut under licence and in accordance with the Nigel Hanlon Memorial Hut Heritage Assessment 2010; and make it available to the public for short-term accommodation, including investigating its use as part of the Hillary Trail.
- Undertake riparian planting and pest plant control in the Piha Mill Camp area, while retaining vistas of the Piha Mill historic site.
- Undertake pest plant control at the entrance to the Maungaroa Lookout Track.
- Support the West Auckland schools' ecological restoration programme on the Ministry of Education land, adjoining the park land.
- Extend interpretation of the Piha Mill in conjunction with the licensee of the Piha Mill Camp









## 5.5 TASMAN AND GAP TRACK AND LOOKOUTS

- Manage the Tasman and Gap Lookouts as coastal lookouts and tracks while retaining the natural character of the area.
- Investigate options to provide formed controlled access or to discourage access to the foreshore from the Gap Lookout, to address safety issues and prevent environmental damage, taking into account the landscape sensitivity of the area.
- Remove pest plants to minimise the fire risk in the area and progressively replace it with locally appropriate native eco-sourced and broadleaved species.
- Repair pedestrian erosion damage at the gap lookout.










## 5.6 MERCER BAY TRACK AND LOOKOUTS

- Manage Mercer Bay Loop Walk as an accessible walk retaining access to lookouts and coastal tramping tracks. Ensure track maintenance is sensitive to the nationally threatened forget-me-not *Myosotis petiolata* var. *pansa* that exists on the track edges.
- Prepare and implement a development plan to review the layout of the arrival area, to improve visitor convenience, safety, and to upgrade the toilets while maintaining the undeveloped and rugged nature of the area.
- Maintain coastal vistas and visibility of the beacon through appropriate vegetation management.
- Support the installation of a pou whenua in the area in consultation with Te Kawerau a Maki and Friends of Arataki.
- At the track entrance interpret the historic sites of the area including the Te Ahua pa, the World War II radar station and the discovery of radio stars.









## REFERENCES AND USEFUL RESOURCES

### AUCKLAND REGIONAL COUNCIL

- Pest plants of the Auckland Region brochures
- Plant Me instead - plants to use in place of common weeds
- Coastal Planting Factsheets - a series of brochures on coastal planting
- Wetland Factsheets - a series of brochures on wetland planting
- Native Forest and Scrublands Factsheets - a series of brochures on native forest and scrubland planting
- Regional Parks Management Plan 2010
- Illustrations of Common Trees and Shrubs of the Waitakere Range
- The Good Start Planting Guide

### COMMUNITY PROJECTS

- The West Coast Plan - a plan for the future management of the West Coast & Waitakere Ranges
- West Coast Plan Liaison Group
- Piha Coast Care
- Piha Ratepayers and Residents Association Inc
- Protect Piha Heritage Society

### PHOTOGRAPHIC COLLECTIONS

- National Library of New Zealand - Alexander Turnbull Library (Timeframes)
- Waitakere City Council

### WAITAKERE CITY COUNCIL

- Eco-sourcing flyer
- Eco-sourcing Code of Practice
- Native to the West - a guide for planting and restoring the nature of Waitakere City
- Riparian Restoration Guidelines
- Waitakere City's Coastal Villages Landscape Assessment (Melean Absolum Limited Landscape Architects)
- Piha Coastal Management Plan
- Piha Reserves Management Plan

### IWI

- Te Kawerau a Maki

### DEPARTMENT OF CONSERVATION

- Track Construction and Maintenance Field Guide

### OTHER

- Harvey, Bob (1998) Untamed Coast: Auckland's Waitakere Ranges and West Coast Beaches, Exisle Publishing Ltd
- Coney, Sandra (1997) Piha a History in Images, The Keyhole Press, Auckland
- Coney, Sandra (2009) Piha: Guardians of the Iron Sands, Piha Surf Life Saving Club Inc.



